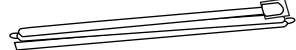
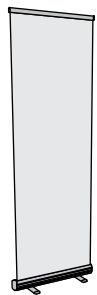


1. FIJACIÓN SUPERIOR GRÁFICA



CONTENIDO



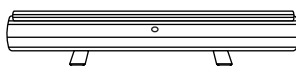
x1

Abre la bolsa, comprueba el contenido de la bolsa y saca todas las piezas con cuidado.



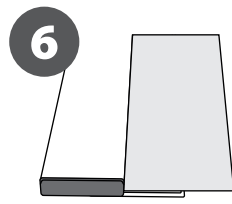
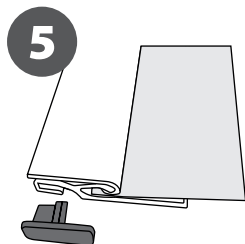
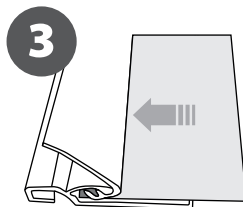
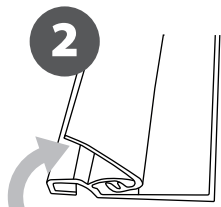
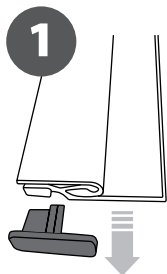
x1

Para configurar el Roll Up, primero debes fijar su gráfico (suministrado por separado) al perfil superior siguiendo los siguientes pasos que se muestran a continuación.

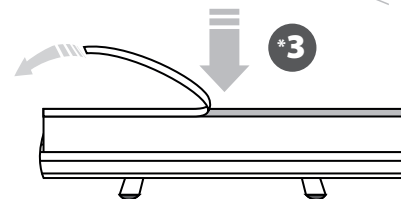
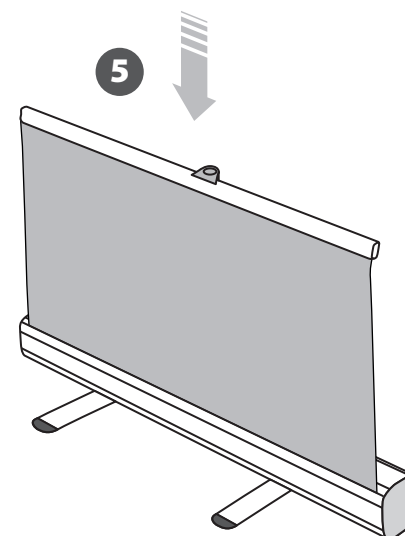
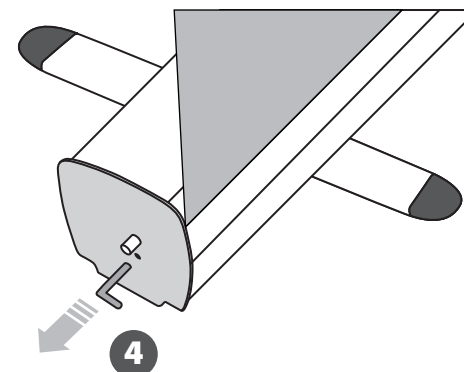
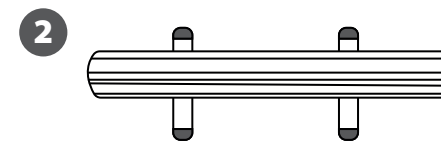
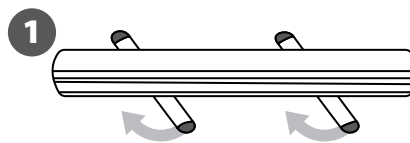


x1

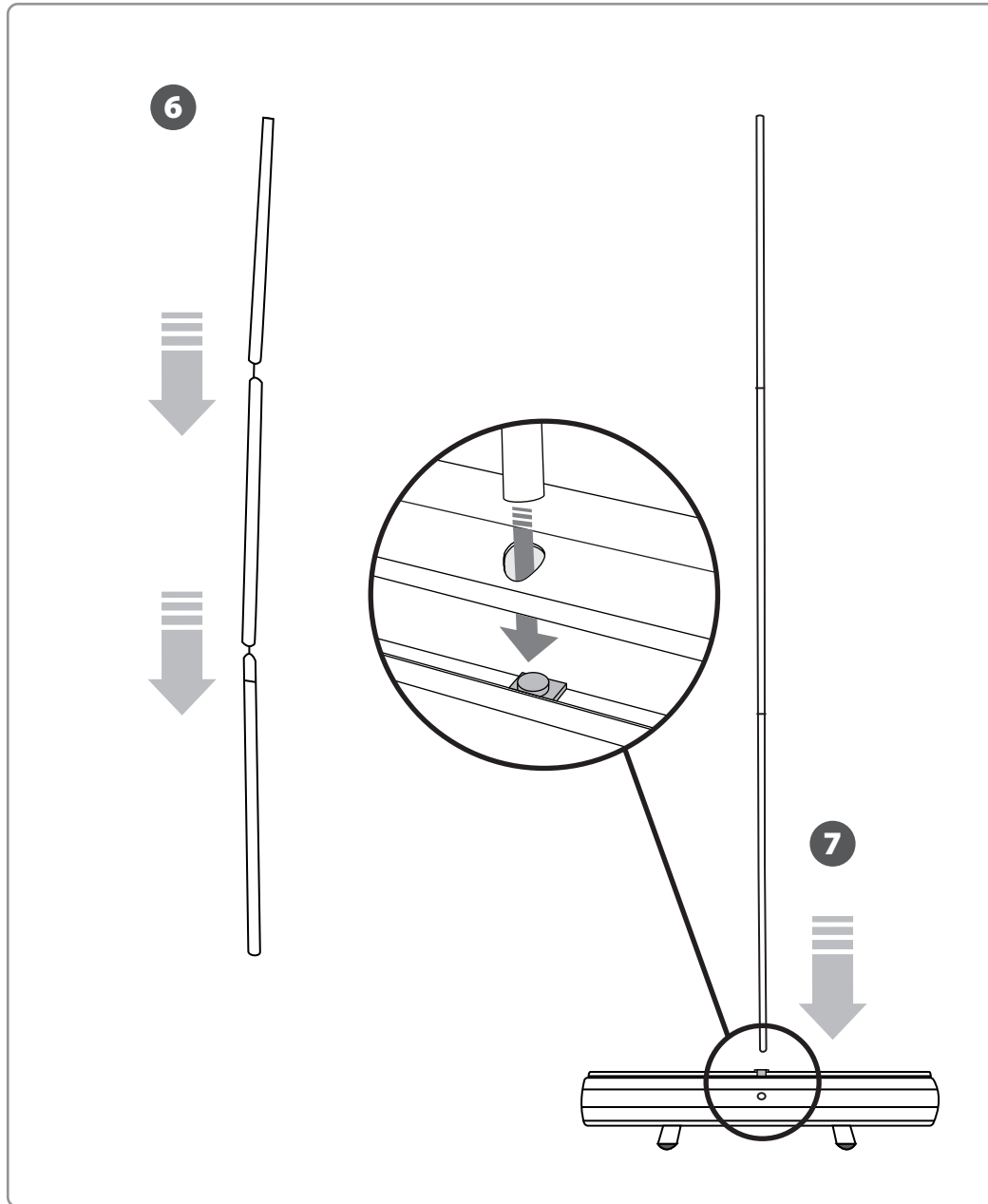
FIJACIÓN GRÁFICA MEDIANTE SNAP RAIL



2. ADJUNTO INFERIOR GRÁFICO



3. MONTAJE DE LA ESTRUCTURA ENROLLABLE



4. ENROLLANDO EL GRÁFICO

