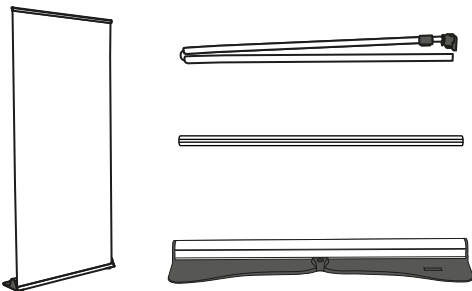


INSTRUCCIONES



 CONTENIDO



x1

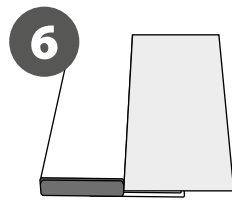
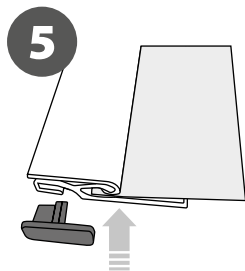
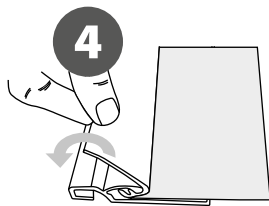
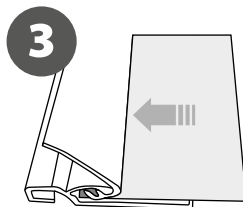
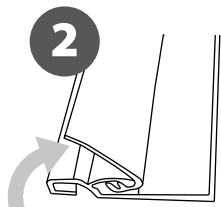
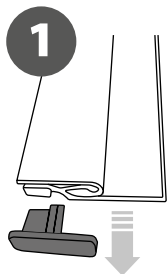
Abra la bolsa, compruebe el contenido de la bolsa y saque todas las piezas con cuidado.

x1

Para configurar el Roll Up, primero debe adjuntar su gráfico (suministrado por separado) al perfil superior siguiendo los siguientes pasos que se muestran a continuación.

x1

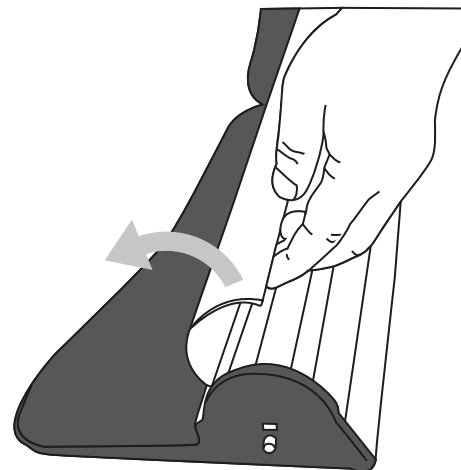
COLOCACION DE LA GRAFICA



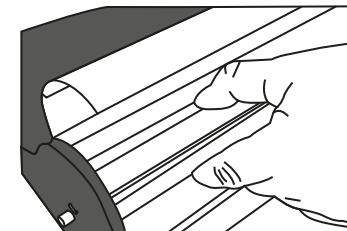
INSTRUCCIONES



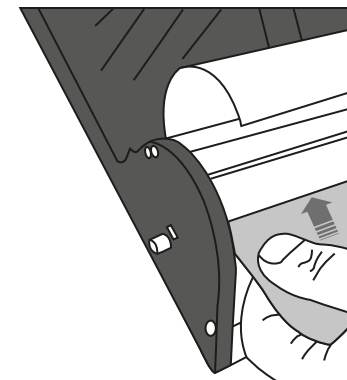
1



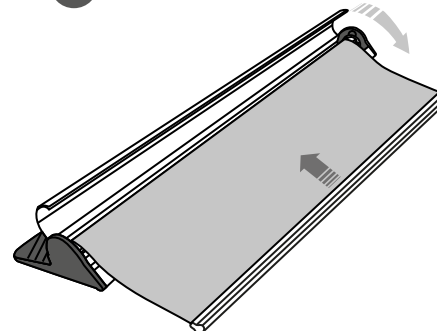
2



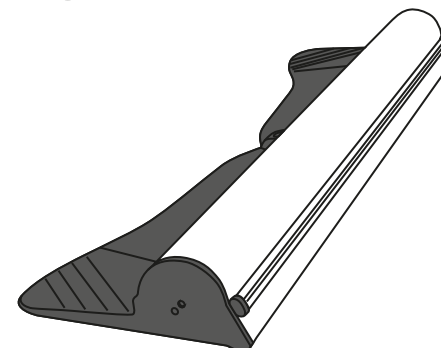
3



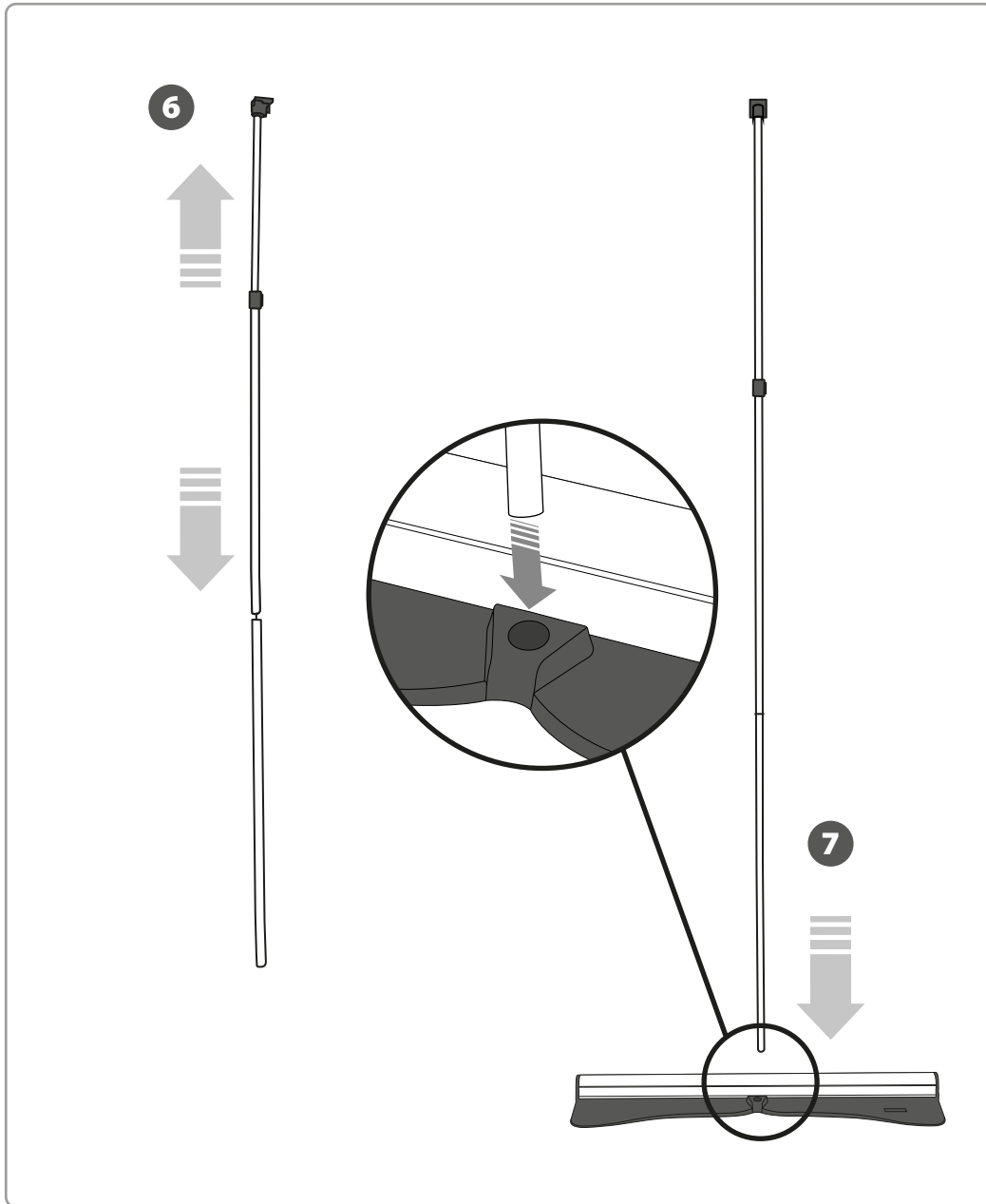
4



5



INSTRUCCIONES



INSTRUCCIONES

