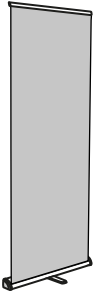


RollUp base triangular

INSTRUCCIONES



CONTENIDO



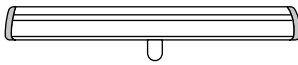
x1

Abra la bolsa, compruebe el contenido de la bolsa y saque todas las piezas con cuidado.



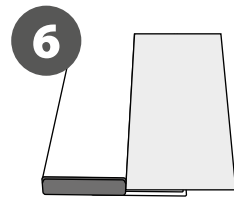
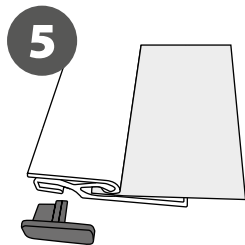
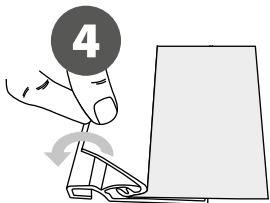
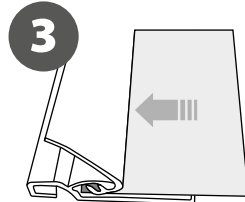
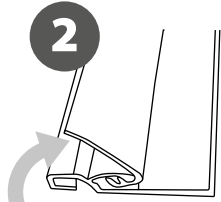
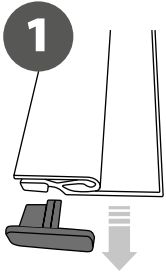
x1

Para configurar el Roll Up, primero debe adjuntar su gráfico (suministrado por separado) al perfil superior siguiendo los siguientes pasos que se muestran a continuación.



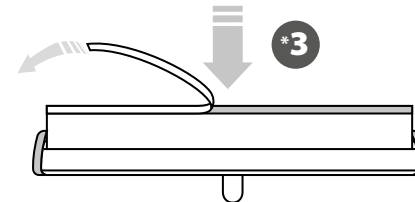
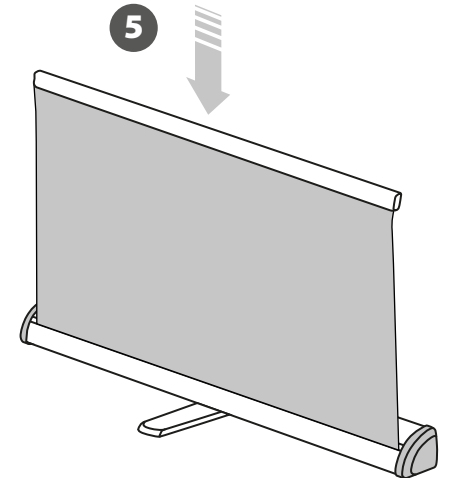
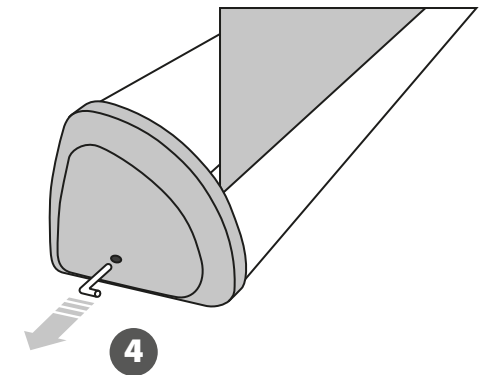
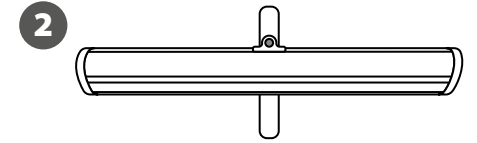
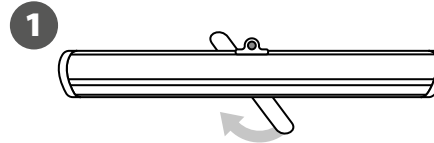
x1

COLOCACION DE LA GRAFICA



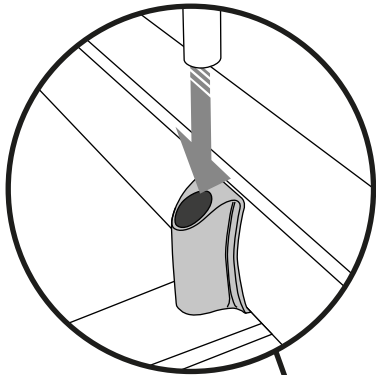
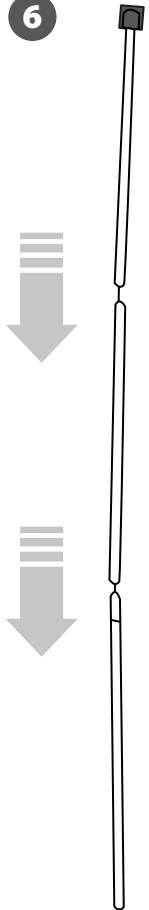
RollUp base triangular

INSTRUCCIONES

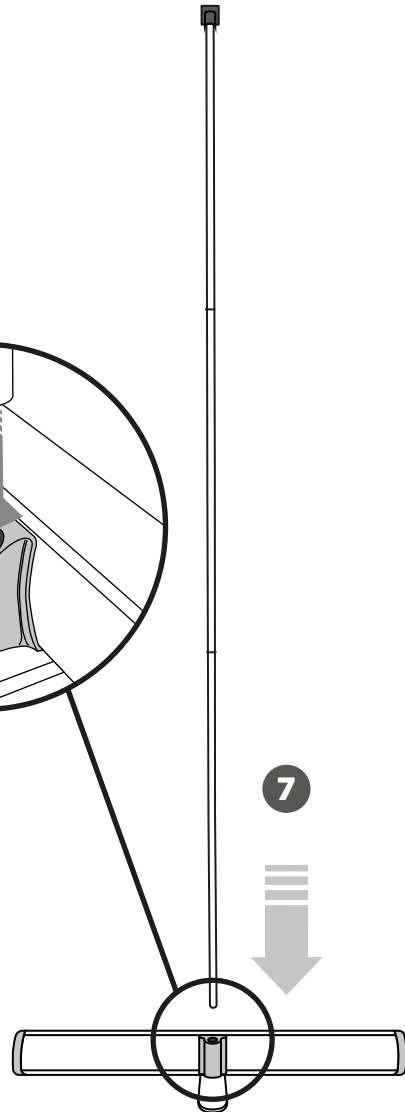




6



7



9

