

SOPOORTES PARA TABLETS



CATÁLOGO - DONCARTELTienda.ES - NOVIEMBRE 2019

Se han convertido en un equipamiento ideal en nuestro punto de venta. Son una forma económica de promocionar productos, ofertas, mostrar catálogos, imágenes, información de producto, menús, etc., de una manera muy atractiva para el cliente. Al ser un medio novedoso atrae mucho más la atención que elementos publicitarios más habituales.

Existen una gran variedad de formatos que permiten adaptarse a distintas ubicaciones en todo tipo de tiendas, negocios, organismos públicos, museos, salas de espera, escaparates, etc.



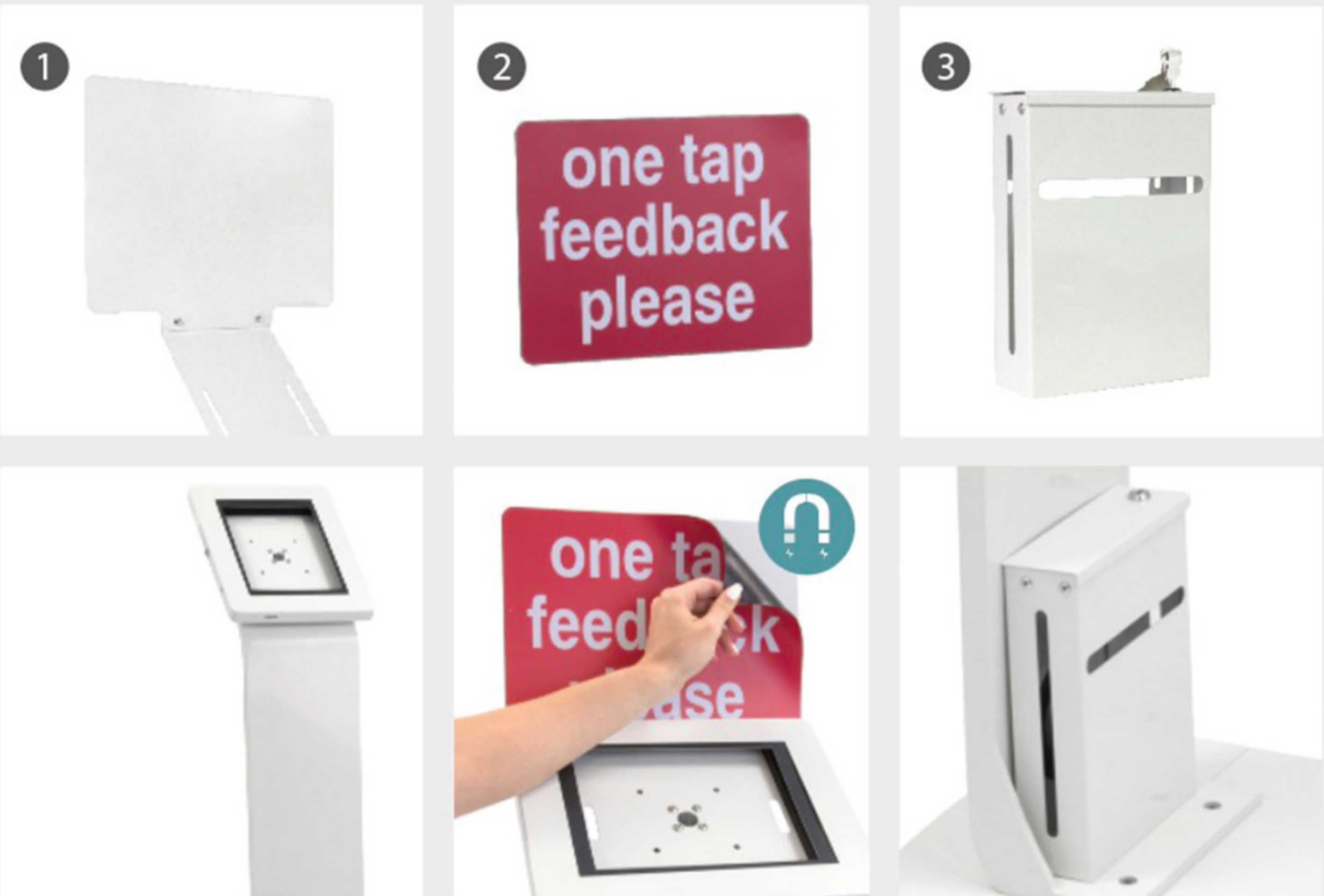
· doncarteltienda.es
· señales.net
· doncartel.es



STAND DETAILS

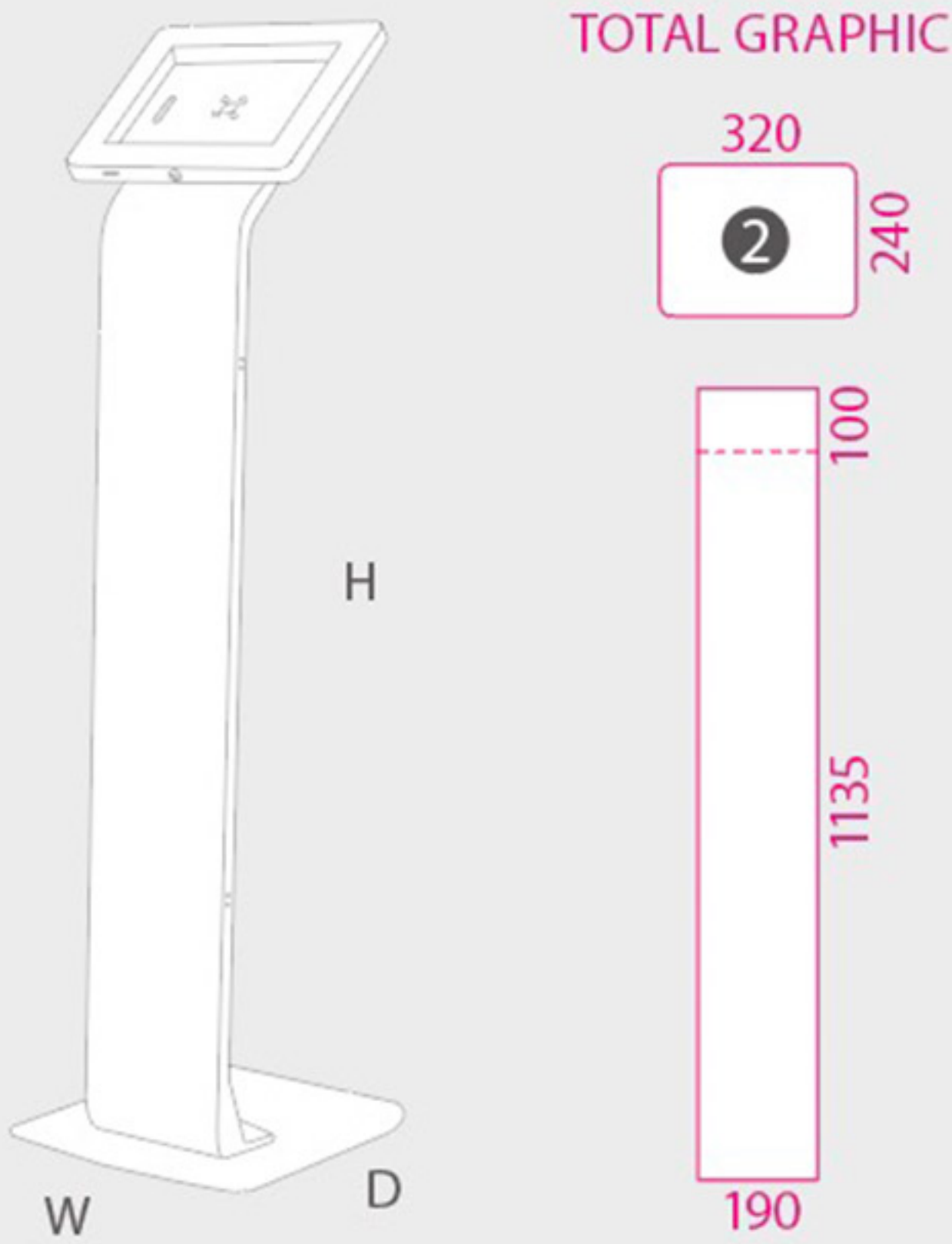


ACCESSORIES INCLUDED



INFORMATION DIMENSIONS ARTWORK *mm

This modern slim Tablet Stand is constructed on heavy duty metal. White and black color available. It features a metal enclosure anti-theft system. Tablet Holder has foam pads for a better grip and to prevent scratches. The enclosure rotates easily for portrait or lanscape presentation. The tablet cable passes through the stand for a clean look. It is possible to fix a magnetic graphic on the stand front. This tablet stand includes the next accessories: ① Top banner plate, ② Top magnetic graphic and ③ Power bank box.



TABLET STAND					
* W: Width H: Height D: Depth					
	QTY	N.W	G.W	C.B.M	Size (WxHxD)
Packing	1	15kg	16kg	0.0859	310x1260x220mm
	External (WxHxD)				
Product	340x1280x390mm				
13.858-1		For 9.7" tablet screen			
13.858-2		For 9.7" tablet screen			



FLOOR METAL
TABLET STAND



* the tablets at this page are not included.

INFO STAND Tablet Stands

STAND DETAILS



INFORMATION

This modern designed Console Station is constructed on heavy duty quality steel. Features a enclosure anti-theft system by 2 key locks. The tablet cable passes through the stand for a clean look. Tablet Holder has foam pads for a better grip and to prevent scratches. Black and white finish available. Request us for optional interchangeable magnetic graphic banner.

DIMENSIONS



TABLET STAND * W: Width H: Height D: Depth

	QTY	N.W	G.W	C.B.M	Size (WxHxD)
Packing	1	23kg	26.50kg	0.219	1340x430x380mm
	External (WxHxD)				
Product	360x1260x300mm				
13.857-1		For tablet screen: 9.7" or 10.5"			
13.857-2		For tablet screen: 9.7" or 10.5"			



CONSOLE STATION TABLET STAND

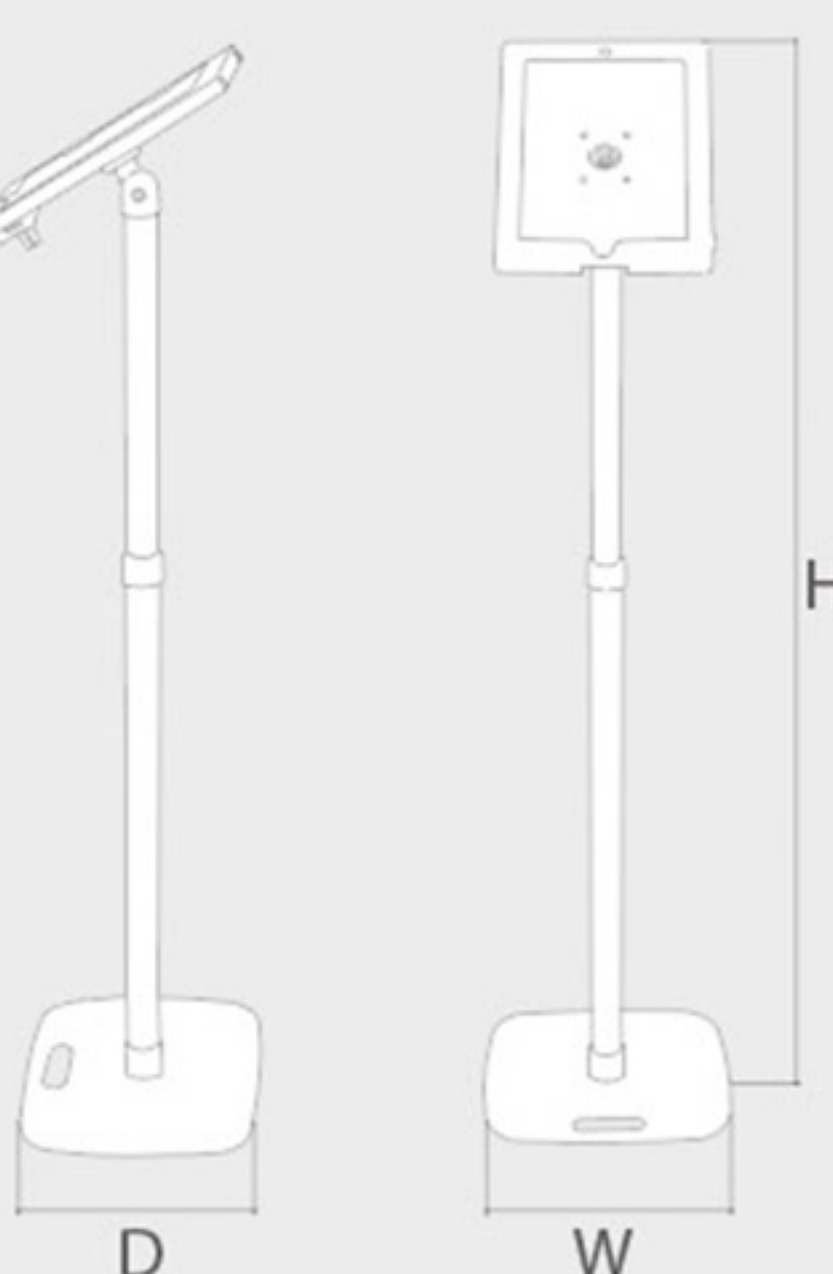


STAND DETAILS



INFORMATION

This black finished Tablet stand is designed for both sitting and standing thanks its telescopic pole. Also, an anti-theft system keeps the technology safely locked. Users may easily rotate 360° or tilt the bracket of the adjustable tablet floor stand for different viewing angles. Tablet Holder has foam pads for a better grip and to prevent scratches. The holder's touchscreen unique design allows access to the home and power buttons while also leaving the auxiliary port open, perfect for credit card readers.

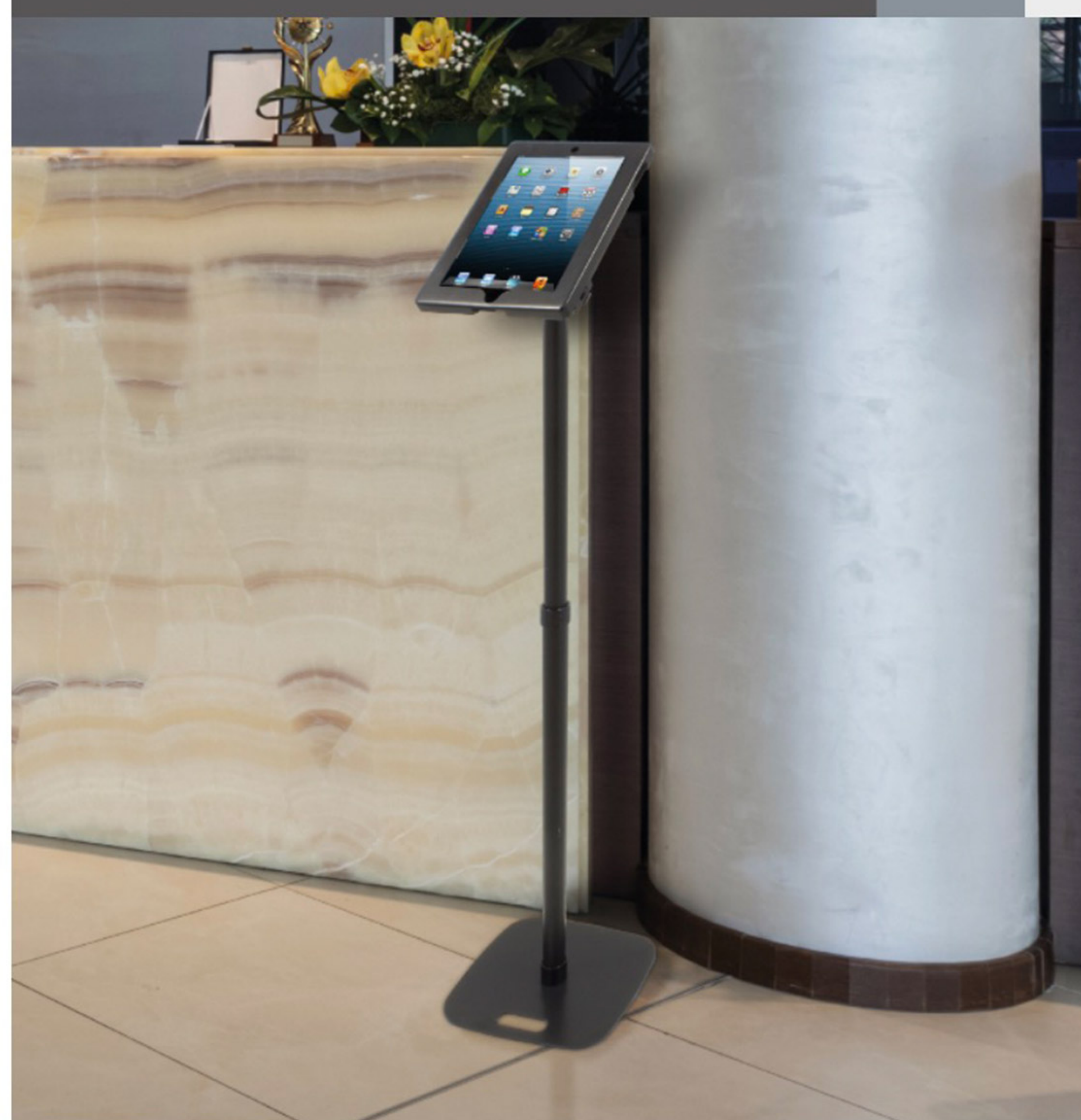


TABLET STAND * W: Width H: Height D: Depth

	QTY	N.W	G.W	C.B.M	Size (WxHxD)
Packing	1	6kg	7kg	0.035	390x110x760mm
	External (WxHxD)				
Product	245x1350x280mm				
10.306		For Tablet: ± 242.8x189.7mm			



ADJUSTABLE POLE TABLET STAND



* the tablets at this page are not included.

STAND DETAILS



INFORMATION

DIMENSIONS

This swan neck Tablet Stand is available in white or black finish. This holder has an universal enclosure anti-theft system. With Kensington hole for additional security. Easily rotates 360° and tilts the enclosure for displaying in different view angles. The tablet cable passes through the pole for getting a clean look.



TABLET STAND		* W: Width	H: Height	D: Depth	
Packing	QTY	N.W	G.W	C.B.M	Size (WxHxD)
	1	6.25kg	7kg	0.041	890x420x110
	External (WxHxD)				
Product	300x1190x380mm				
13.856-1		For Tablets from 7.9" to 10.5"			
13.856-2		For Tablets from 7.9" to 10.5"			





STAND DETAILS



INFORMATION

DIMENSIONS

This 2-in-1 tablet support is designed for floor or desk use. White or black color. Tablet Holder has foam pads for a better grip and to prevent scratches. With metal enclosure anti-theft system and Kensington hole. Holder easily rotates for portrait or landscape display. The tablet cable passes through the pole for a clean look.



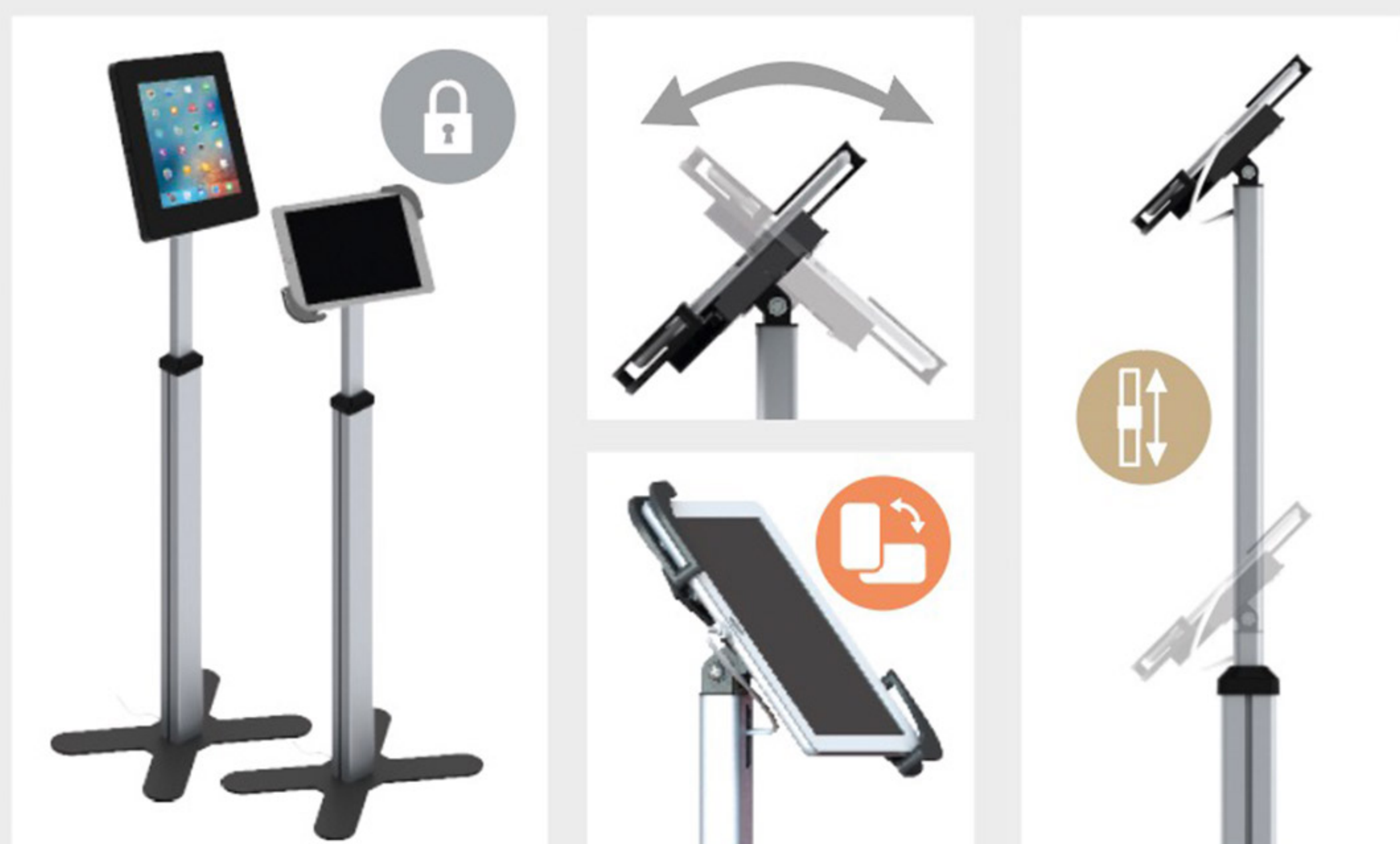
TABLET STAND DESK		* W: Width	H: Height	D: Depth	
Packing	QTY	N.W	G.W	C.B.M	Size (WxHxD)
	1	7kg	8kg	0.041	890x420x110
	External (WxHxD)				
Product	300x1190x380mm				
13.855-1		For 9.7" or 10.5" tablets			
13.855-2		For 9.7" or 10.5" tablets			





* the tablets at this page are not included.

STAND DETAILS




INFORMATION

DIMENSIONS

This tablet floor stand is designed for both sitting and standing use thanks its telescopic pole. In addition, this stand has two available holding systems, universal clamp or metal enclosure. Holder easily rotates 360° and tilts for displaying in different view angles. The tablet cable passes through the pole for a clean look.



TABLET STAND * W: Width H: Height D: Depth *mm

	QTY	N.W	G.W	C.B.M	Size (WxHxD)	
Packing	1	6.25kg	7kg	0.041	890x420x110	
	Height (H)					
Product	800-1300					
13.868	Universal clamp for tablets from ± 7.9" to 10.5"					
13.869	Metal enclosure for tablet screen ± 9.7" or 10.5"					

DOUBLE ENCLOSURE TELESCOPIC TABLET STAND



STAND DETAILS




INFORMATION

DIMENSIONS * mm

This Tablet Holder is designed for desk or wall mounting. Also, an anti-theft system keeps the technology safely locked. It has foam pads for a better grip and to prevent the scratches. The touchscreen holder's unique design allows access to the home and power buttons while also leaving the auxiliary port open, perfect for credit card readers. The bracket rotates easily 90° for different viewing angles.



TABLET WALL | DESK * W: Width H: Height D: Depth

	QTY	N.W	G.W	C.B.M	Size (WxHxD)	
Packing	1	1kg	1.55kg	0.006	365x92x204mm	
	External (WxHxD)					
Product	248x194x270mm					
14.108	For Tablet: ± 240x185mm					

METAL FRAME WALL DESK TABLET HOLDER



* the tablets at this page are not included.

HOLDER DETAILS



INFORMATION

DIMENSIONS * mm

Desktop support with Z shape aluminium base and Kensington hole for additional security. Acrylic enclosure locks by 4 screws and rotates for portrait or landscape display. Tablet Holder has foam pads for a better grip and to prevent scratches. Compatible install of Square-Paypal card readers. Black and white colour.



TABLET DESK

* W: Width H: Height D: Depth

	QTY	N.W	G.W	C.B.M	Size (WxHxD)	
Packing	1	1.75kg	1.92kg	0.0201	340x200x295mm	
	External (WxHxD)					
Product	210x300x150mm					
13.851-1		For 9.7" or 10.5" tablets				
13.851-2		For 9.7" or 10.5" tablets				

ACRYLIC FRAME
DESK TABLET HOLDER



HOLDER DETAILS



INFORMATION

DIMENSIONS * mm

Desktop Tablet support with Z shape aluminium base and kensington hole for additional security. Metal enclosure locking with key and rotates for portrait or landscape display. Tablet Holder has foam pads for a better grip and to prevent scratches. Available in black and white.



TABLET DESK

* W: Width H: Height D: Depth

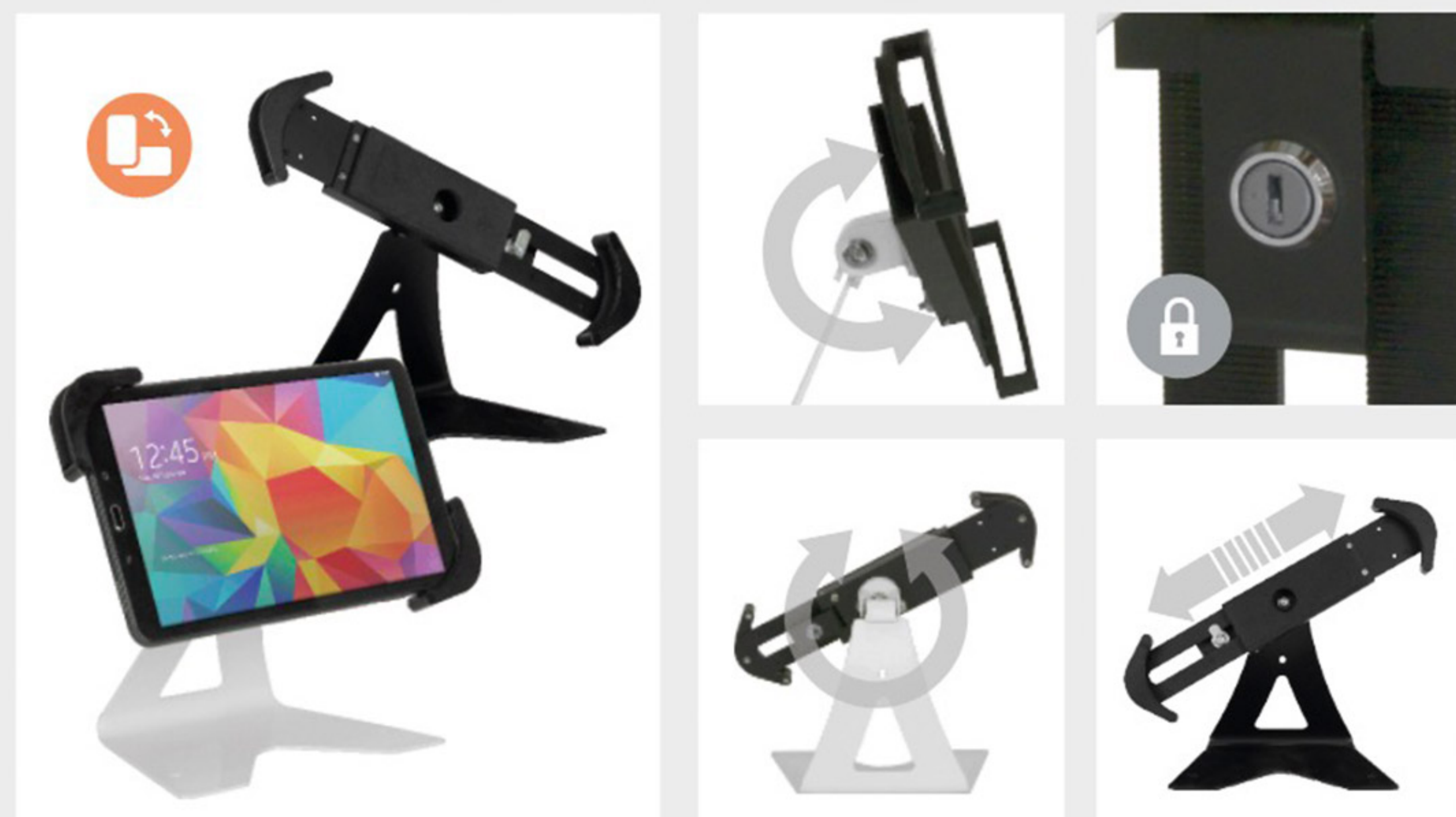
	QTY	N.W	G.W	C.B.M	Size (WxHxD)	
Packing	1	1.75kg	1.92kg	0.0201	340x200x295mm	
	External (WxHxD)					
Product	210x315x150mm					
13.852-1		For 9.7" or 10.5" tablets				
13.852-2		For 9.7" or 10.5" tablets				

METAL CASE
"Z" BASE DESK HOLDER



* the tablets at this page are not included.

HOLDER DETAILS



INFORMATION

DIMENSIONS * mm

Desktop tablet holder with open "Z" shape metal base and an adjustable universal holder with anti-theft enclosure system. This enclosure easily rotates 360° and tilts for displaying in different view angles. Base with mounting holes for permanent installation. Black and white colour available.



TABLET DESK

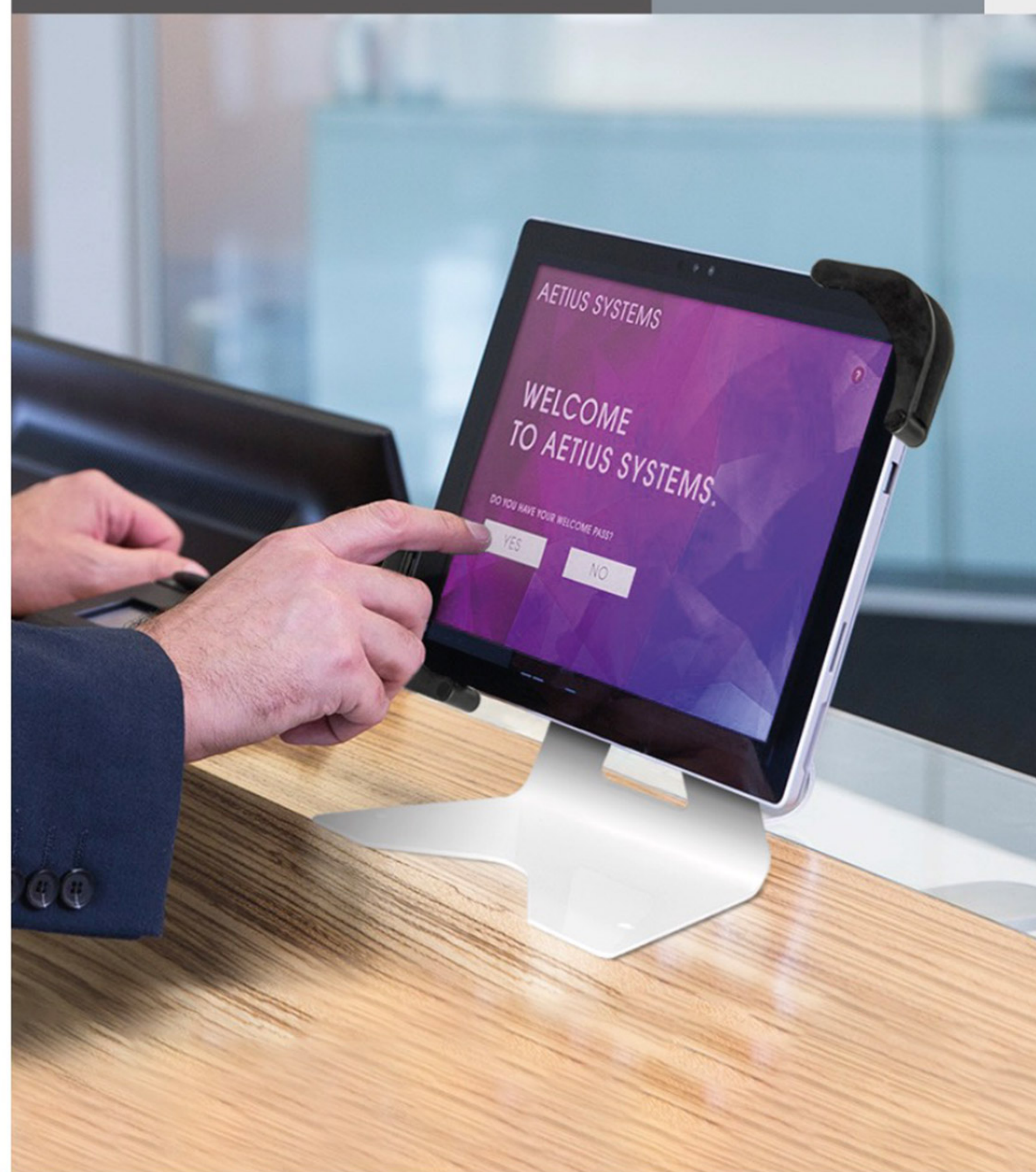
* W: Width H: Height D: Depth

	QTY	N.W	G.W	C.B.M	Size (WxHxD)
Packing	1	1.24kg	1.57kg	0.02	330x170x290mm
		External (WxHxD)	Base		
Product		325x295x150mm	200x150mm		
13.865-1		For tablets from 7.9" to 10.5"			
13.865-2		For tablets from 7.9" to 10.5"			

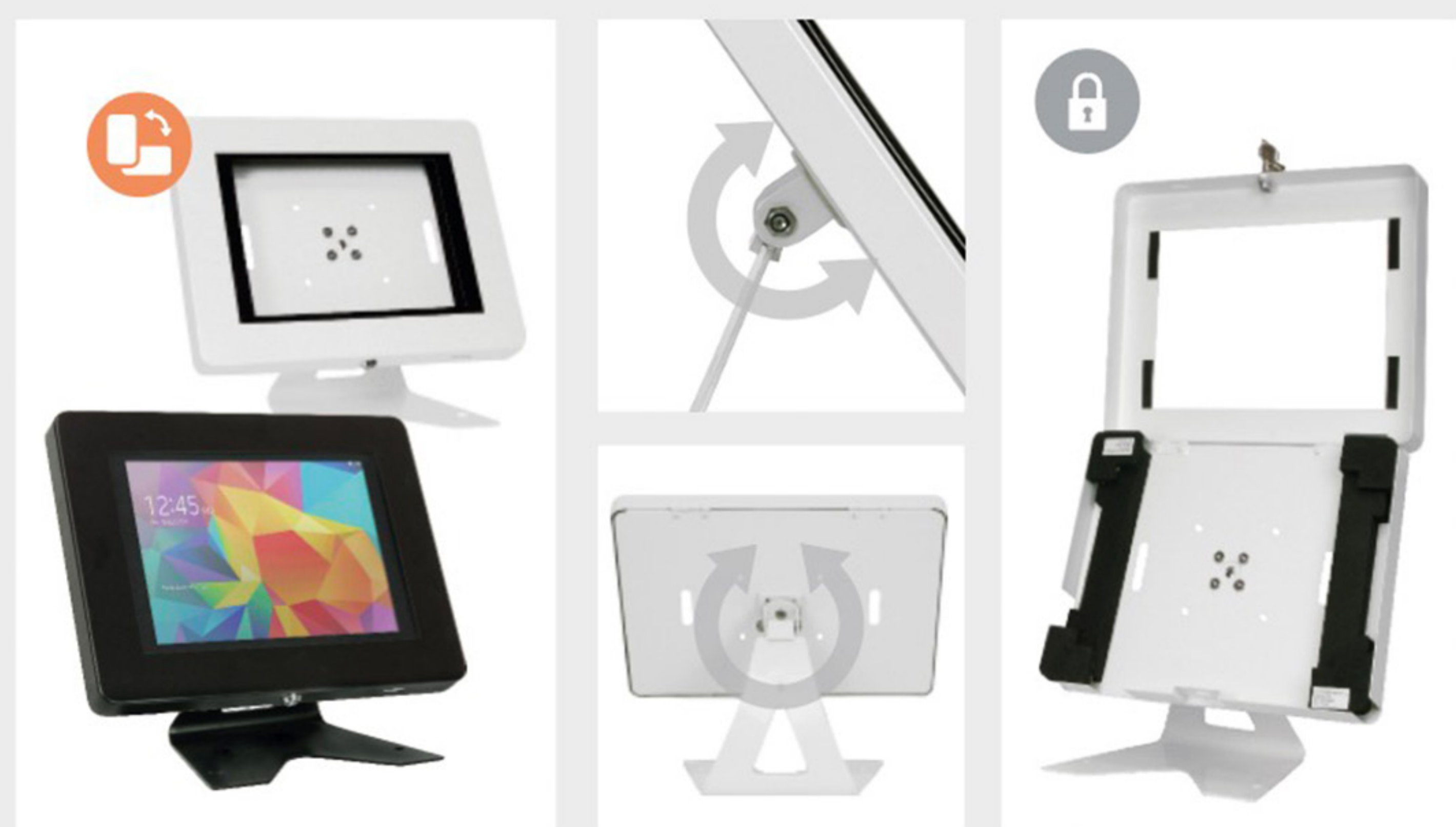


UNIVERSAL FRAME OPEN "Z" BASE DESK HOLDER

new



HOLDER DETAILS



INFORMATION

DIMENSIONS * mm

Desktop tablet holder with open "Z" shape metal base with mounting holes. Metal enclosure with key lock and Kensington hole for additional security. The Case easily rotates 360° and tilts for displaying in different view angles. Foam Pads included for a better fitting. Black and white colour available.



TABLET DESK

* W: Width H: Height D: Depth

	QTY	N.W	G.W	C.B.M	Size (WxHxD)
Packing	1	2.08kg	2.41kg	0.02	330x170x280mm
		External (WxHxD)	Base		
Product		310x270x180mm	200x150mm		
13.859-1		For 9.7" or 10.5" tablets			
13.859-2		For 9.7" or 10.5" tablets			



METAL CASE OPEN "Z" BASE DESK HOLDER

new



* the tablets at this page are not included.

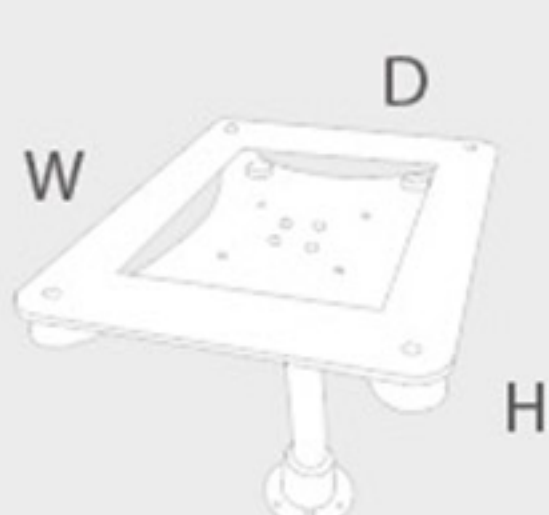
HOLDER DETAILS



INFORMATION

DIMENSIONS * mm

Desktop or wall mounting tablet support with full range of movement thanks to its durable metal flexing column. Acrylic enclosure locks by 4 screws and rotates for portrait or landscape display. Compatible install of Square-Paypal card readers. Available in black and white.



TABLET WALL | DESK

* W: Width H: Height D: Depth

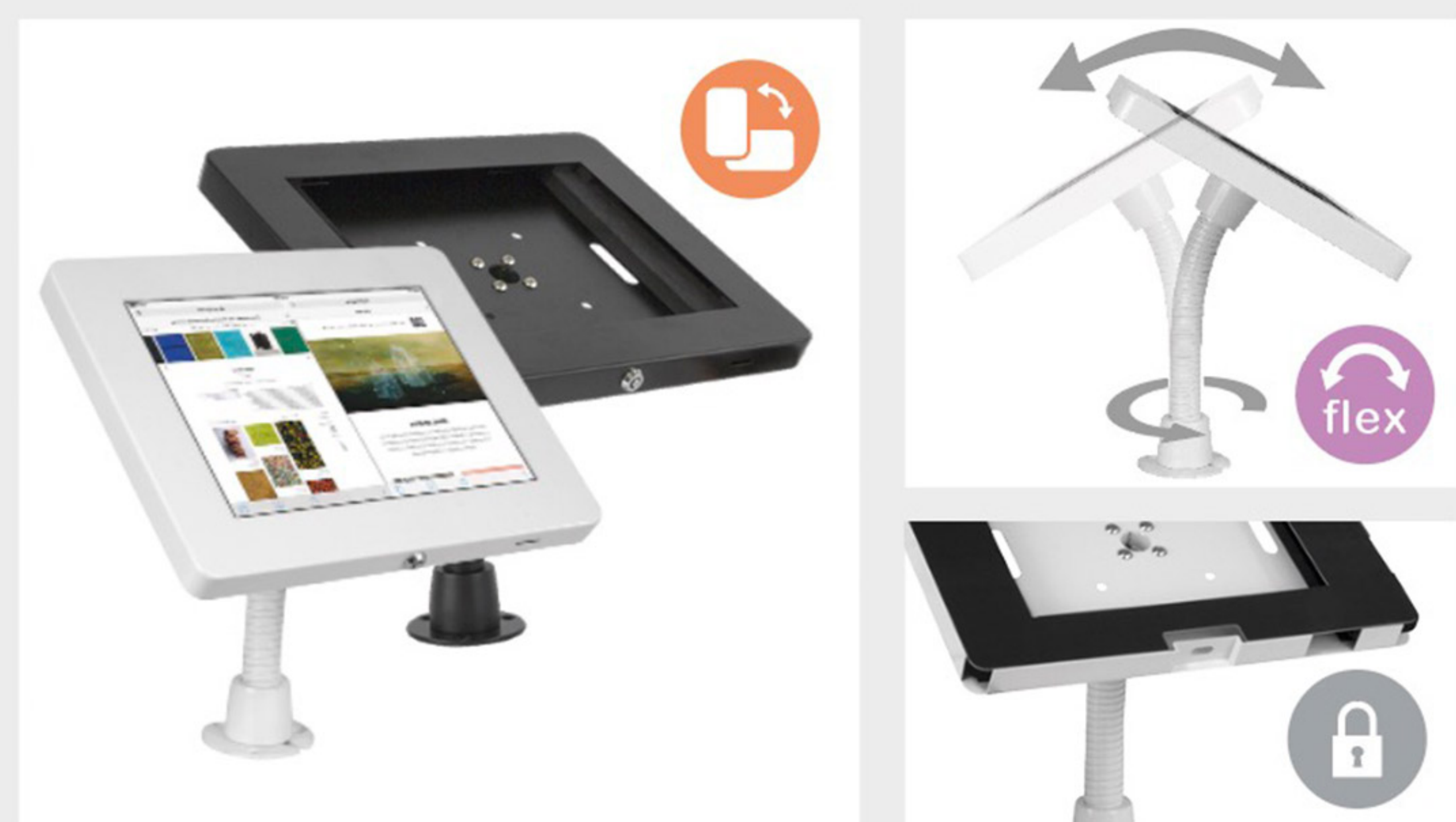
	QTY	N.W	G.W	C.B.M	Size (WxHxD)
Packing	1	1.33kg	1.83kg	0.0113	350x280x115mm
	External (WxHxD)				
Product	295x250x230mm				
13.853-1		For 9.7" or 10.5" tablets			
13.853-2		For 9.7" or 10.5" tablets			



FLEX ACRYLIC WALL DESK TABLET HOLDER



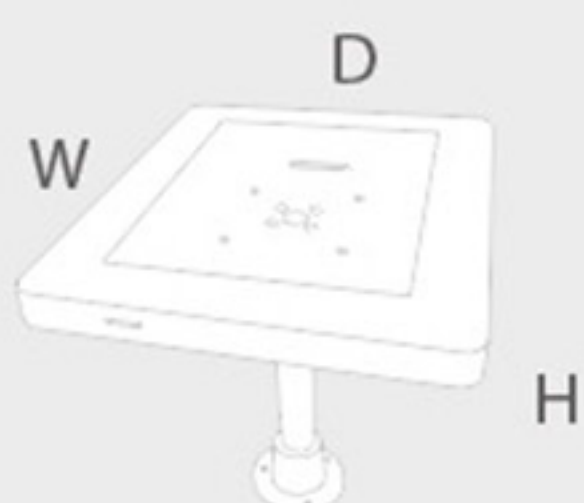
HOLDER DETAILS



INFORMATION

DIMENSIONS * mm

Desktop or wall mounting tablet support with full range of movement thanks to its durable metal flexing column. Metal enclosure locks with key and kensington hole for additional security. TabletHolderhasfoampadsforabetter grip and to prevent scratches. Available in black and white.



TABLET WALL | DESK

* W: Width H: Height D: Depth

	QTY	N.W	G.W	C.B.M	Size (WxHxD)
Packing	1	1.33kg	1.83kg	0.0113	350x280x115mm
	External (WxHxD)				
Product	310x250x240mm				
13.854-1		For 9.7" or 10.5" tablets			
13.854-2		For 9.7" or 10.5" tablets			



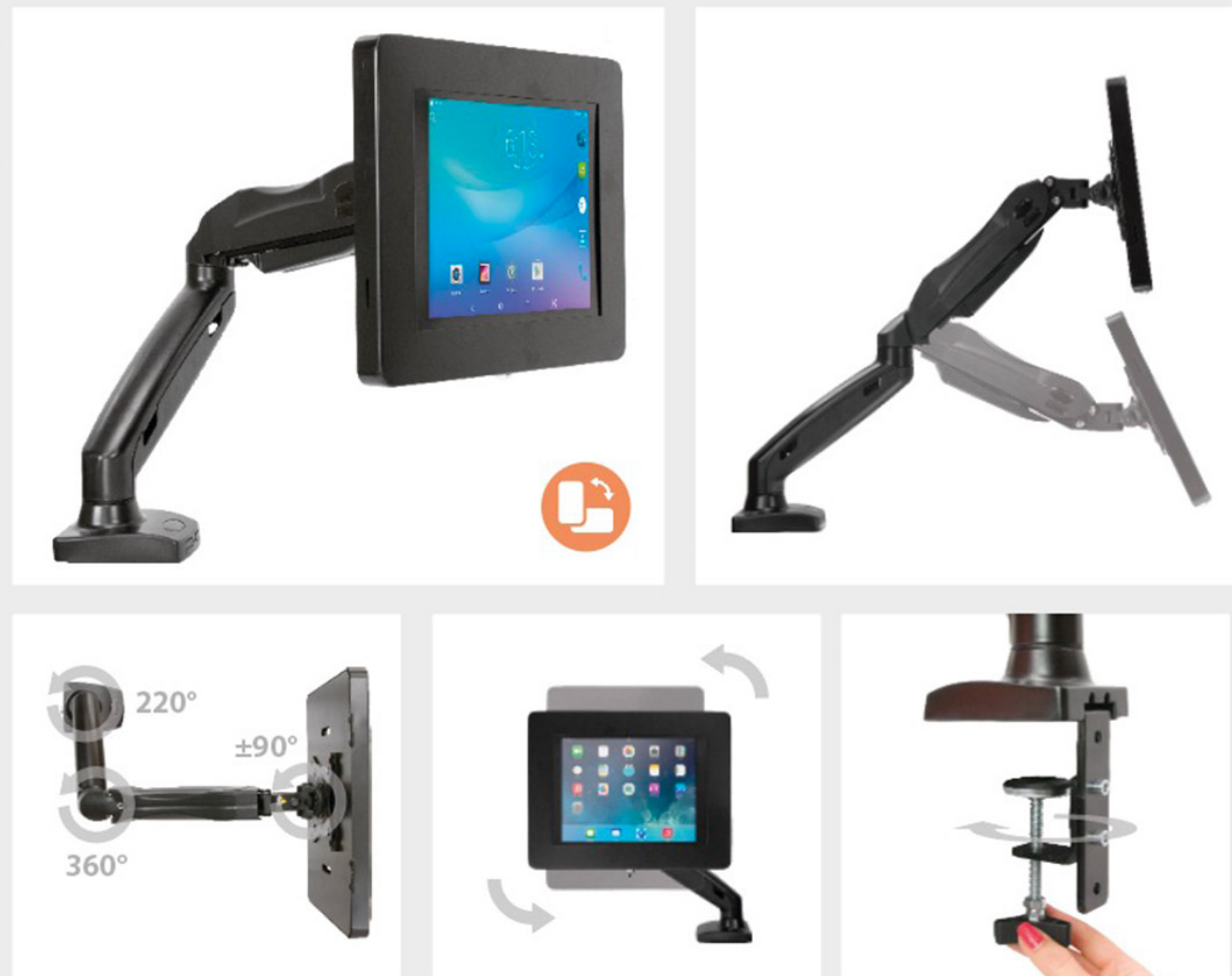
FLEX METAL CASE WALL DESK TABLET HOLDER



* the tablets at this page are not included.

new

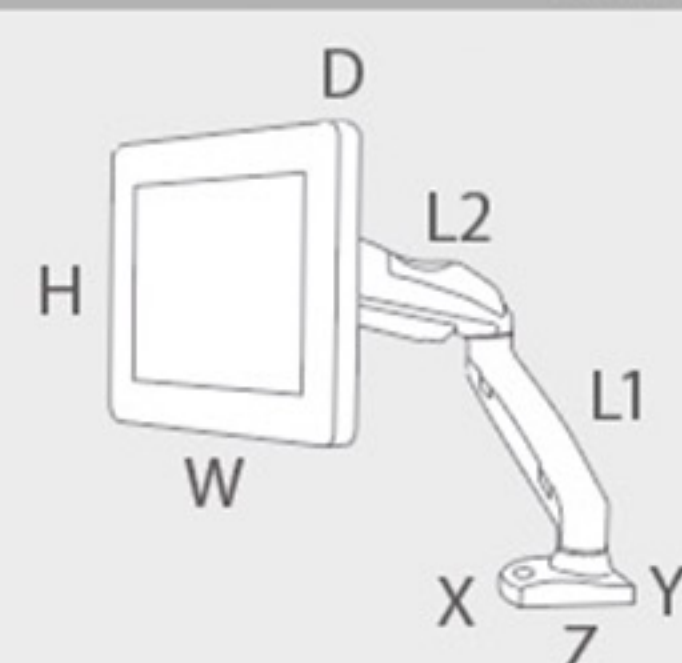
HOLDER DETAILS



INFORMATION

DIMENSIONS * mm

Desktop Tablet support with all direction effortless adjustment and kensington security hole. Metal enclosure locking with key and 360° rotates for portrait or landscape display. With integrated cable holder, two bottom fixing ways and foam pads for holding the tablet.



TABLET DESK * W: Width H: Height D: Depth

	QTY	N.W	G.W	C.B.M	Size (WxHxD)
Packing	1	4.17kg	4.6kg	0.02	385x140x310mm
		Case (WxHxD)	Base (XxYxZ)		Arm (L1+L2)
Product		310x240x25mm	91x105x45mm		250x340mm
13.866-2		For 9.7" or 10.5" tablets			



BALANCE ARM DESK TABLET HOLDER



new

HOLDER DETAILS



INFORMATION

DIMENSIONS * mm

Wall or desktop mounting tablet holder with wide range of movement thanks to its Ball Head with control Knob. Metal enclosure locks with key and kensington hole for additional security. Tablet Holder has foam pads for a better grip and to prevent scratches. Bracket with mounting holes.



TABLET WALL | DESK * W: Width H: Height D: Depth

	QTY	N.W	G.W	C.B.M	Size (WxHxD)
Packing	1	1.67kg	1.92kg	0.01	330x120x280mm
		External (WxHxD)	Base(XxY)		
Product		310x240x107mm	120x120mm		
13.867-2		For 9.7" or 10.5" tablets			



BALL HEAD CASE WALL TABLET HOLDER



* the tablets at this page are not included.

INFO STAND Tablet Stands

STAND DETAILS



INFORMATION

This multifunction tablet stand provides a Tablet Holder with foam pads for a better grip and a 500x700mm aluminium click frame. Available in grey color. This holder has an 1700mm aluminium pole with heavy silver steel base. Metal enclosure anti-theft system by key lock. Easily rotate 360° the enclosure for displaying portrait or landscape presentation. The tablet cable pass through the pole for a clean look. Request us for 2-sided frame or other Click frame sizes.

DIMENSIONS



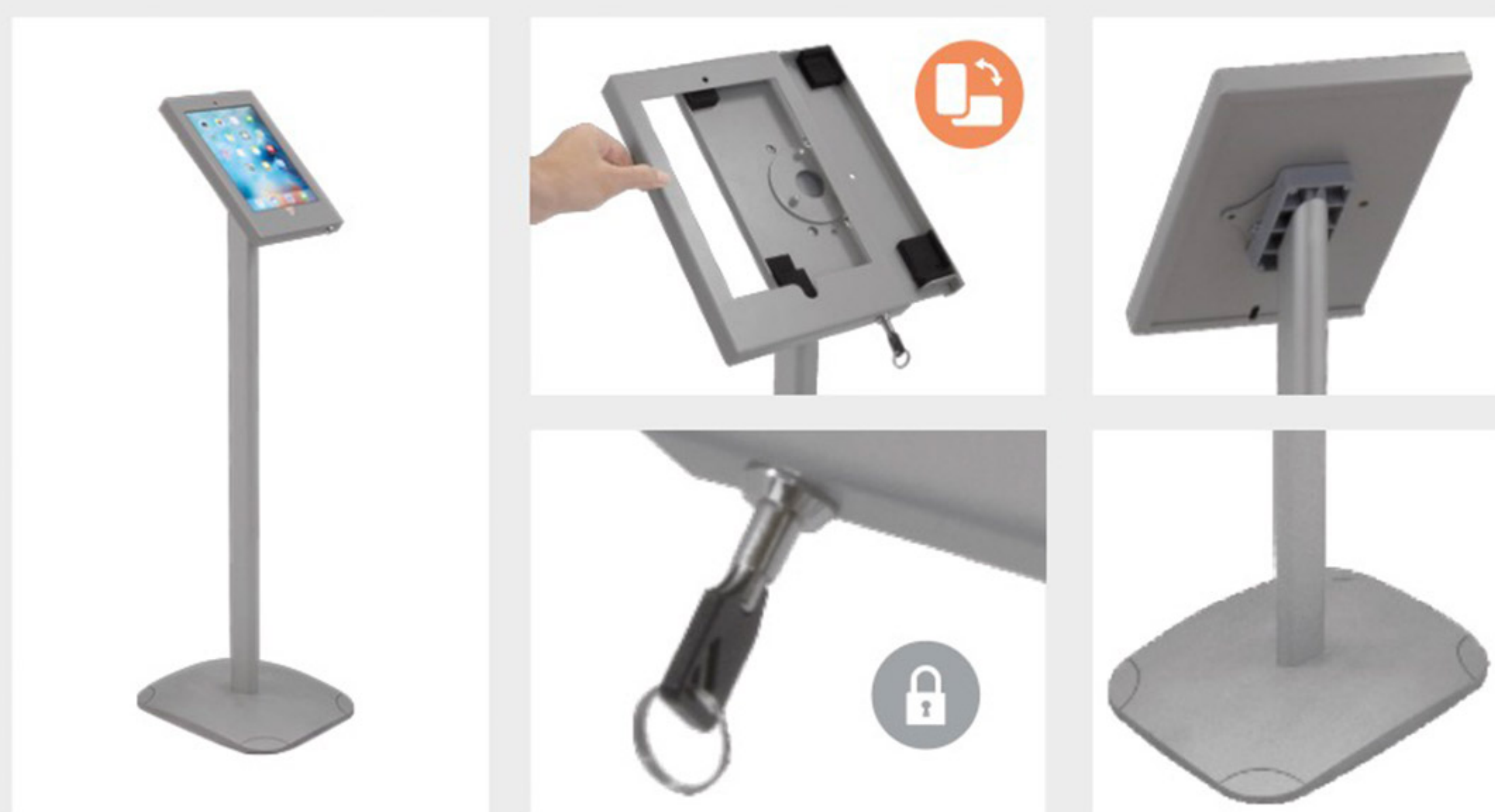
TABLET STAND * W: Width H: Height D: Depth

	QTY	N.W	G.W	C.B.M	Size (WxHxD)	
Packing	1	8.2kg	8.5kg	0.0097	440x440x50mm	 x5
	1	2.8kg	3.6kg	0.0123	80x80x1920mm	
	1	1.85kg	2.1kg	0.0026	360x240x30mm	
	1	0.2kg	0.32kg	0.0012	195x110x58mm	
	1	1.3kg	1.7kg	0.0103	760x545x25mm	
	External (WxHxD)		Frame (XxY)			
Product	542x1921x481mm		500x700mm			
13.876		For tablet screen: 9.7" or 10.5"				

CLICK FRAME TABLET STAND



STAND DETAILS





INFORMATION

This Tablet Stand is available in grey color has a metal enclosure anti-theft system and the enclosure rotates easily for portrait or landscape view. Tablet Holder has foam pads for a better grip and to prevent scratches. The tablet cable passes through the pole for a clean look. Cable not included.

DIMENSIONS



TABLET STAND * W: Width H: Height D: Depth

Model Name		W. Width		H. Height		D. Depth	
Packing	QTY	N.W	G.W	C.B.M	Size (WxHxD)		x3
	1	1.65kg	1.76kg	0.0036	388x263x35mm		
	1	0.75kg	0.95kg	0.0047	930x85x60mm		
	1	1.85kg	2.1kg	0.0026	360x240x30mm		
	External (WxHxD)						
Product	303x988x328mm						
13.877		For tablet screen: 9.7" or 10.5"					

SLIDING LOCK TABLET STAND



* the tablets at this page are not included.



La Cartelera y el Equipamiento Comercial, SL

Calle Luis I, 45 Nave A
Poligono Industrial de Vallecas
28031 Madrid

info@doncarteltienda.es

Teléfono gratuito de atención a clientes:
900 897 122

Horario de Lunes a Jueves:
De 9 a 14 h y de 16 a 18 h.

Horario Viernes: De 9 a 14 h.



facebook.com/doncarteltienda



[@doncarteltienda](https://twitter.com/doncarteltienda)



youtube.com/c/DoncarteltiendaEstuweb



instagram.com/doncarteltienda/



es.pinterest.com/doncarteltienda/doncarteltienda



<https://es.linkedin.com/in/doncarteltienda>

